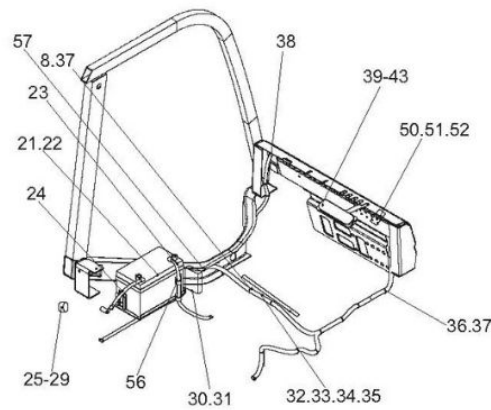
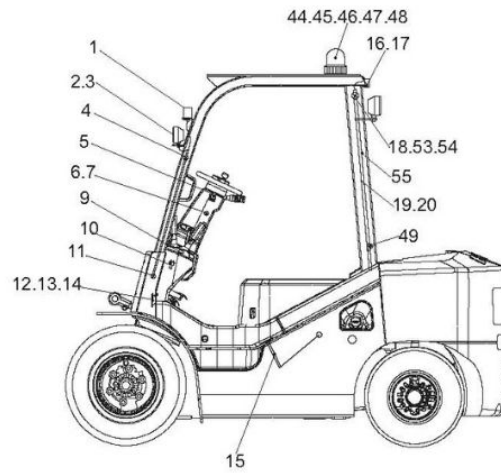




B 电气系统  
B ELECTRIC SYSTEM



HRH2BS2401

Anhui Leading Forklift Parts Co., Ltd.  
www.leadingforkliftparts.com  
www.youtube.com/@leadingforkliftpar

# HELI Forklift Parts Manual

## Forklift Electric System for H3 series

### 1-3.5Ton, IC forklift (1-11 page)

This Heli forklift parts manual is for forklift electric system of H3 series, 1-3t IC forklifts. There are other parts manuals in this group that catalogue covers all parts for Heli H3 series, 1-3.5 Ton forklift trucks.

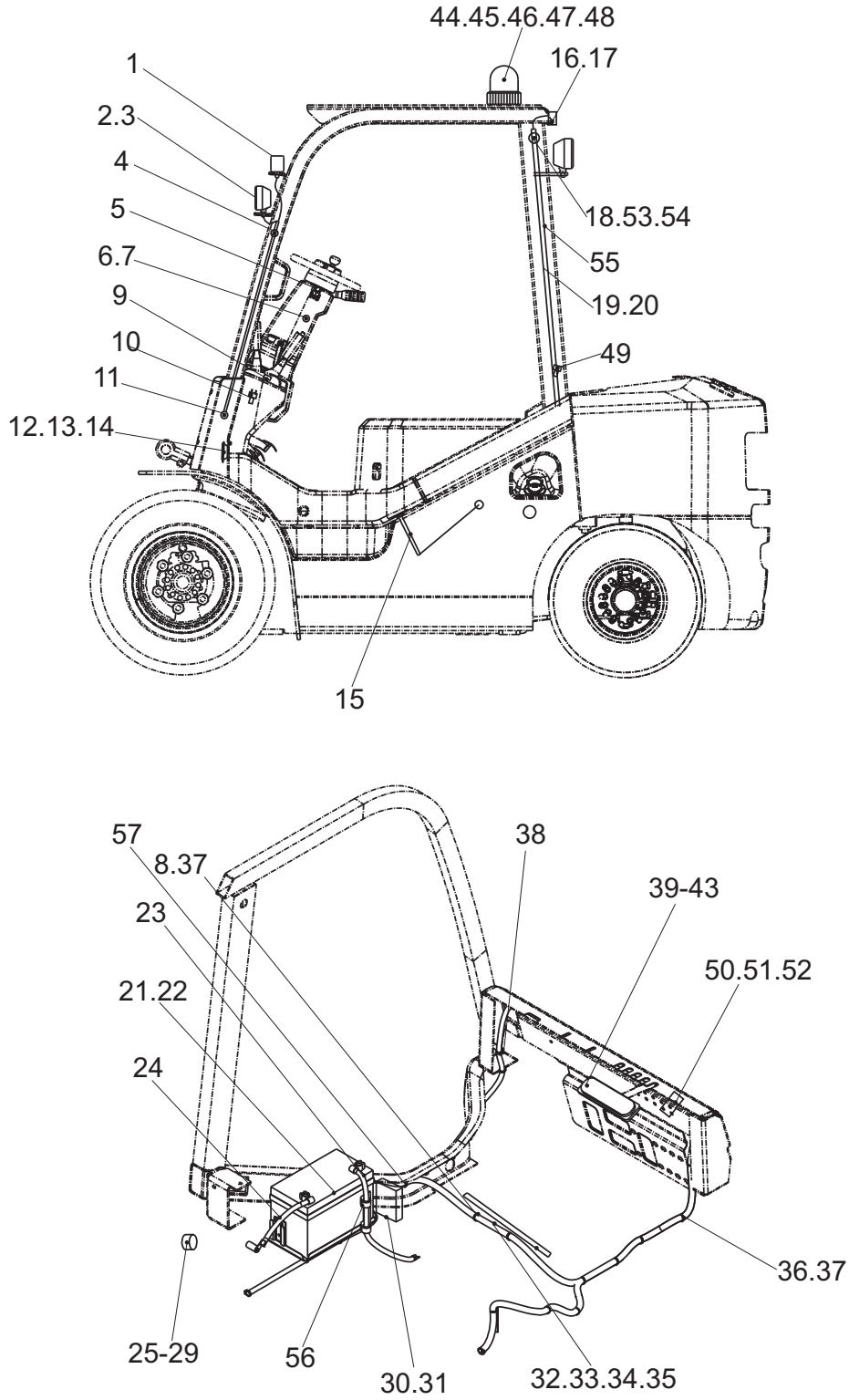
The strength of our company is that we have the full range of forklift parts for HELI forklift, and many parts for JAC forklift, Hangcha forklift, the full range of China engines and parts for Xinchai, Quanchai, FAW, YTO, Zhaochai, forklift transmission parts, forklift axle parts, forklift brake parts, forklift hydraulic parts, forklift electric parts, forklift bearing, forklift mast, forklift filter, forklift seal, forklift tire and forklift rim etc. If you are interested in China brand forklift parts, please contact us for a better option!



Anhui Leading Forklift Parts Co., Ltd.  
www.leadingforkliftparts.com  
www.youtube.com/@leadingforkliftparts



B 电气系统  
B ELECTRIC SYSTEM



HRH2BS2401

**B 电气系统**  
**B ELECTRIC SYSTEM**

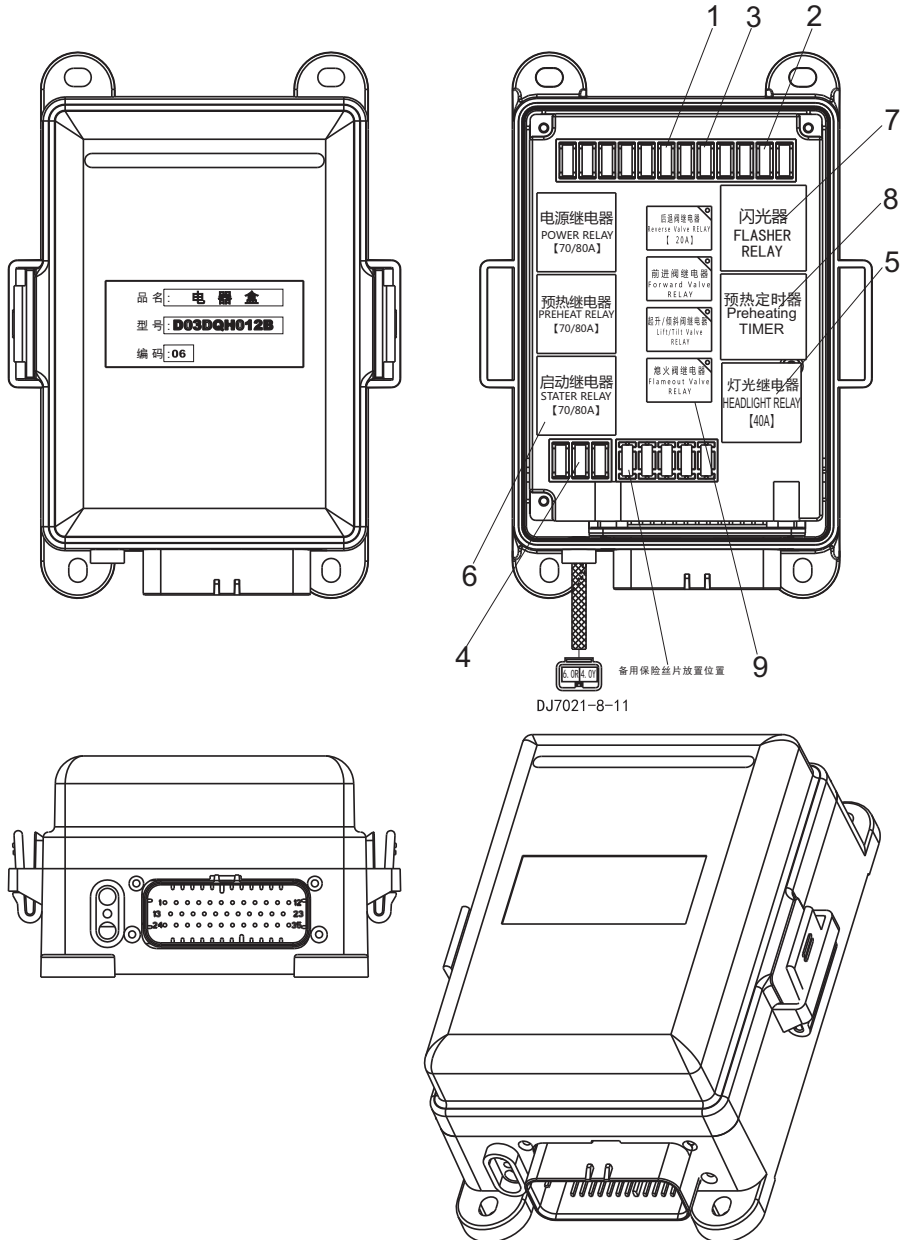
序号 Item No.	图号 Part No.	版本 Edition	零部件名称	Description	件数 Q'ty	备注 Remark	适用时间 Applied time
A	HRH2BS2401	D04	电气系统	Electric system	1		
01	D08QXD-LED	D00	前组合灯	Front combination lamp	2		
02	Z8600-121WD	00	前大灯	Head lamp	2		-2017.06
-	D08HL01	00	前大灯	Head lamp	2		2017.07-
03	H2MD2-43001	D00	LED前大灯	LED head lamp	2	选用Optional	
04	H2MD2-40901	D00	前灯线束	Wire harness, head Lamp	2		
05	D09JK803HL	D01	双手柄组合开关	Combination switch	1		
06	Z8710-04110	D00	启动开关	Key switch	1	不通用 Not current	
07	Z8710-04110T	D00	启动开关	Key switch	1	通用 Current	
08	D03XKQ352	D00	线束固定卡	Harness fixing clip	4		
09	HK2S2-42061	00	油门线束固定支架	Bracket	1		
10	Z8740-JK205	D00	脚制动开关	Brake switch	1		-2017.06
-	D09JK205B	D00	脚制动开关	Brake switch	1	Jk205	2017.07-
11	A22A2-40260-2	D00	出线胶圈	Rubber ring	2		
12	Z8500-1D124	D00	喇叭	Horn	1		
13	B0330-08016	00	螺栓M8X16	Bolt	1	GB5783-86	
14	B5050-00008	00	垫圈8	Washer, lock	1	GB93-87	
15	D04RG4158	D01	燃油传感器	Fuel sensor	1		
16	D08HWD-LED	00	后组合灯	Rear combination lamp	2		
17	H2MD2-40111	D00	后组合灯垫	Mat	2		
18	H24C2-40701	D00	防尘胶圈	Rubber ring	4		
19	H2MD2-40401	D00	后护顶架线束	Rear overhead guard harness	1		
20	D05DJD-12D	D00	倒车语音喇叭	Reversing voice speaker	1	选用Optional	
21	D016-QW-60B	D00	蓄电池	Battery	1		
22	D06BX301	D01	熔断器总成	Fuse	1		
23	H2MD2-40801	D00	电瓶引线(+)	Cable	1		
24	H2MD2-40821	D00	电瓶引线(-)	Cable	1		
25	A61S2-41301	00	倒车蜂鸣器	Back buzzer	1		
26	B1210-06016	00	螺钉M6X16	Screw	7	GB818-86	
27	B5050-00006	00	垫圈6	Washer, lock	7	GB93-87	
28	B5310-00006	00	垫圈6	Washer	7	GB97.1-85	
29	B4123-00006	00	螺母M6	Nut	1	GB6170-86	

HRH2BS2401

**B 电气系统**  
**B ELECTRIC SYSTEM**

序号 Item No.	图号 Part No.	版本 Edition	零部件名称	Description	件数 Q'ty	备注 Remark	适用时间 Applied time
30	D03DQH012B	D00	电器盒	Box	1	见附表/See attachments	
31	D03KZQ012	D00	控制器	Controller	1		
32	D03XK0367	D00	线束固定卡	Harness fixing clip	14		
33	H2MD2-40201	D00	线束布置图	Wire harness disposal	1		
34	HK2S2-40201	D00	电气原理图	Principle diagram	1		
35	H2BS2-40311	D02	车身线束	Wire harness, body	1		
36	H24C2-42131	00	固定可松开式锁式扎带	Belt clip	8		
37	Z9260-40200	00	捆扎带	Belt clip	2		
38	D03XK0366	D00	线束固定卡	Harness fixing clip	3		
39	D04ZB173YG	D00	组合仪表	Combination M/T	1	见附表/See attachments	
40	D04ZB173YG-WZ	D00	组合仪表	Combination M/T	1	中性包装Neutral Packing 见附表/See attachments	
41	B1210-04012	00	螺钉M4X12	Screw	4	GB818-85	
42	B5050-00004	00	垫圈4	Washer, lock	4	GB93-87	
43	B5323-00004	00	垫圈4	Washer	4	GB97.1-85	
44	H2MD2-41201	D00	电风扇安装	Fanner mount	1	选用Optional	
45	H2MD2-41301	D07	后工作灯安装	Rear work lamp mount	1	选用Optional	
46	HRH2MD2414	D02	警示灯安装	Install alarm lamp	1	选用Optional	
47	H2MD2-41501	D01	限速报警总成	Annunciator	1	选用Optional	
48	H2MD2-41901	D00	倒车把手安装	Reversing handle assembling	1	选用Optional	
49	H2MD2-41601	D02	电源总开关	Battery main switch	1	选用Optional	
50	D09JK937-000- 2.37	D00	暖风机开关	Switch	1	选用Optional	
51	D09JK937-000- 2.5	D00	雨刮器开关	Blade, wiper switch	1	选用Optional	-2017.03
-	D09JK937-045- 2.5	D00	雨刮器开关	Blade, wiper switch	1	选用Optional	2017.04-
52	HS2B2-40401	D02	燃料选择开关	Switch	1		
53	H24C2-40701	D00	防尘胶圈	Rubber ring	2	不装驾驶室或 前挡风时用	
54	H2MD2-42801	D00	出线胶圈	Rubber ring	3	装驾驶室或前 挡风时用	
55	H2MD2-43701	D02	护顶架线束	Overhead guard harness	1	选用Optional	
56	D03XK0195	00	线束固定卡	Harness fixing clip	9		

## B 电器盒 B ELECTRIC BOX



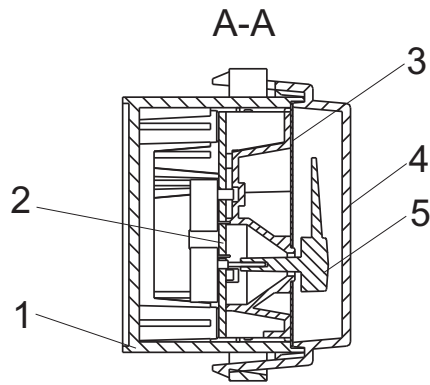
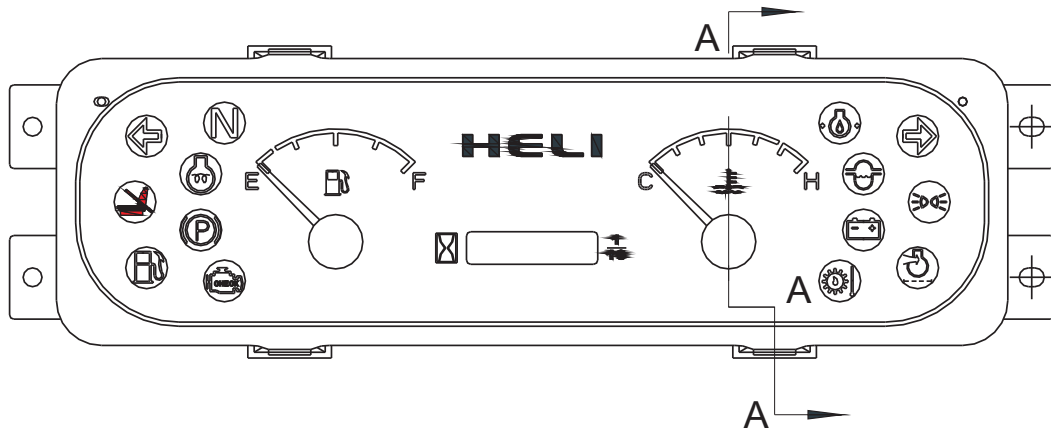
D03DQH012B

**B 电器盒**  
**B ELECTRIC BOX**

序号 Item No.	图号 Part No.	版本 Edition	零部件名称	Description	件数 Q'ty	备注 Remark	适用时间 Applied time
A	D03DQH012B	D00	电器盒	Electric box	1		
01	D06MINI7.5A	00	7.5A保险片	Fuse piece	6		
02	D06MINI10A	00	10A保险片	Fuse piece	3		
03	D06MINI15A	00	15A保险片	Fuse piece	2		
04	D06MINI20A	00	20A保险片	Fuse piece	1		
05	D07JD191-40A	00	40A继电器	Relay	2		
06	D07JD191-70/80A	00	80A继电器	Relay	2		
07	D07SG14143	00	闪光器	Flasher	1		
08	D07HD4243-012-12S	00	定时器	Timer	1		
09	D07JD191-20A	00	20A继电器	Relay	4		

**D03DQH012B**

B 组合仪表  
B COMBINATION M/T



HRH2MD2406

**B 组合仪表**  
**B COMBINATION M/T**

序号 Item No.	图号 Part No.	版本 Edition	零部件名称	Description	件数 Q'ty	备注 Remark	适用时间 Applied time
A	HRH2MD2406 D04ZB173A	D00	组合仪表	Combination M/T	1	江铃493、大柴 498	
-	HRH2MD2406 D04ZB173A-WZ	D00	组合仪表	Combination M/T	1	中性包装Neutral Packing	
-	HRH2MD2406 D04ZB173B	D00	组合仪表	Combination M/T	1	新昌、锡柴、五十铃 、久保田、朝柴、帕 金斯、三菱、4JG2	
-	HRH2MD2406 D04ZB173B-WZ	D00	组合仪表	Combination M/T	1	中性包装Neutral Packing	
-	HRH2MD2406 D04ZB173C	D00	组合仪表	Combination M/T	1	日产K21、K25	
-	HRH2MD2406 D04ZB173C-WZ	D00	组合仪表	Combination M/T	1	中性包装Neutral Packing	
-	HRH2MD2406 D04ZB173D	D00	组合仪表	Combination M/T	1	GM-PSI	
-	HRH2MD2406 D04ZB173D-WZ	D00	组合仪表	Combination M/T	1	中性包装Neutral Packing	
-	HRH2MD2406 D04ZB173E	D00	组合仪表	Combination M/T	1	康明斯QSB4.5	
-	HRH2MD2406 D04ZB173E-WZ	D00	组合仪表	Combination M/T	1	中性包装Neutral Packing	
-	HRH2MD2406 D04ZB173YA	D00	组合仪表	Combination M/T	1	大柴CA498- 06T3R	
-	HRH2MD2406 D04ZB173YA-WZ	D00	组合仪表	Combination M/T	1	中性包装Neutral Packing	
-	HRH2MD2406 D04ZB173YG	D00	组合仪表	Combination M/T	1	三菱	
-	HRH2MD2406 D04ZB173YG-WZ	D00	组合仪表	Combination M/T	1	中性包装Neutral Packing	
-	HRH2MD2406 D04ZB173YH	D00	组合仪表	Combination M/T	1	全柴495、新昌 498	
-	HRH2MD2406 D04ZB173YH-WZ	D00	组合仪表	Combination M/T	1	中性包装Neutral Packing	
-	HRH2MD2406 D04ZB173YJ	D00	组合仪表	Combination M/T	1	V2403	
-	HRH2MD2406 D04ZB173YJ-WZ	D00	组合仪表	Combination M/T	1	中性包装Neutral Packing	
-	HRH2MD2406 D04ZB173Y-CU1	D00	组合仪表	Combination M/T	1	康明斯QSF2.8	
-	HRH2MD2406 D04ZB173Y-	D00	组合仪表	Combination M/T	1	中性包装Neutral Packing	
01	D04H110-1	D00	后壳	Shuck	1		
02	D04H298.1	D00	印制板组合	Board	1		
03	D04H298-1	D00	标度盘	Meter	1		
04	D04H110-3	D00	面罩	Cover	1		
05	D04H110-4A	D00	指针	Finger	2		

HRH2MD2406